



NURIT[®] 2085

Card Payment Terminal



LANDLINE



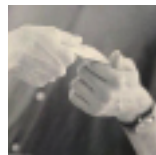
SECURITY



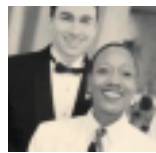
THE ROBUST ELECTRONIC TRANSACTION SOLUTION FOR PROCESSING MULTIPLE PAYMENT OPTIONS

Do you need an affordable but highly flexible payment processing solution? Need to offer customers multiple payment options to enhance their in-store experience? Lipman has produced a simple, convenient, all-in-one solution, where terminal and printer, plus optional built-in PIN pad and smart card reader, are integrated into one compact design. Lipman complies with industry standards for connectivity and data transfer. Lipman gives your retail or food services operation the processing security your operation needs, the ease of use your employees want and the speed your customers demand. Think about how such flexibility can increase sales and boost satisfaction. Then think about Lipman... and the proven NURIT Family of transaction-enhancing solutions.

ONE POWERFUL INTEGRATED SOLUTION MEETS ALL OF YOUR TRANSACTION NEEDS



- The sleek, ergonomic, compact design won't clutter counter space.
- The simple, menu-driven interface is fully integrated with the keyboard, eliminating the need for complicated keypad overlays and templates.
- Programmable LCD softkeys and hotkeys provide one-touch access to customizable functions and business-specific applications.



- Large, 2 line x 16 character backlit display enhances readability.
- Operates on the expandable and adaptable NURIT platform, certified by processors and financial institutions.

- A wide variety of customizable transaction reports provides you with a helpful as well as cost saving accounting and business management tool.
- Can handle multiple payment types: credit, debit, cash, T&E, EBT, check verification, guarantee and truncation, pre-paid cards, loyalty/gift cards, smart cards and proprietary cards.

RETAIL - LARGE & SMALL

DELICATESSANS

CONVENIENCE STORES

RESTAURANTS

FOOD SERVICES

MALL KIOSKS

CONCESSIONS

CONVENTION CENTERS

SHOPPING CENTERS

ENTERTAINMENT VENUES

BUS & TRAIN STATIONS

PARKING GARAGES

Lipman

TransAction Solutions™

NURIT[®] 2085

Card Payment Terminal



ONE SEAMLESS TRANSACTION SOLUTION DELIVERS IT ALL

The NURIT 2085 goes beyond the simple transaction swipe to deliver a complete payment management tool in one integrated, compact and comprehensive package. It processes all card payments, in addition to cash and checks. It also generates customizable current and batch history reports to help you run your business. A high-speed, built-in, quick-loading thermal printer operates quickly and quietly, eliminating the annoying noise and ribbon problems that are commonly associated with impact printers.

FAST, FLEXIBLE AND HASSLE-FREE

Occupying minimal workspace, the proven NURIT 2085 continues to rank among Lipman's most popular and attractive solutions. Employees who use it every day appreciate its menu driven, user-friendly interface. For the busy merchant, customizable hotkey shortcuts make daily operation a breeze, plus it's a cinch for new employees to learn.

SPEED AND VERSATILITY DELIVER BLAZING PERFORMANCE

At the heart of the NURIT 2085 lies a fast Motorola, 32-bit microprocessor, driving its ability to satisfy your daily productivity needs and your customers' demanding requirements, both today and tomorrow. Flash memory, driven by software coded in ANSI "C" language, provides the flexibility to develop and implement custom applications as needed. Split dial capability for connecting with multiple payment hosts enables merchants to choose from among the most cost-effective processors for any given payment type.

Be sure to ask your service provider how the NURIT 2085 Card Payment Terminal can satisfy your demanding customers' needs today and tomorrow, while improving your business performance. To find out more about the complete NURIT Family of transaction-enhancing solutions, call your service representative, call Lipman toll-free at 1-800-454-7626 or visit us at: www.lipmanusa.com



SPECIFICATIONS

Hardware

- 2-line by 16-character backlit display
- 32-key keypad, including 4 hot keys and 4 soft keys (no overlay needed)
- 12.5 lines per second graphical thermal printer
- 32-bit Motorola 68xxx-series microprocessor
- Memory
 - 1MB Flash memory for software
 - 256KB RAM for transactions (battery backed up)
- 1200/2400 bps modem
- Dialup Connectivity Options
 - asynchronous
 - synchronous
- Rear access peripheral ports
 - 2 x RS-232 (comm ports)
 - 1 x RS-232 (external PIN pad port)
 - 2 x RJ-11 (phone jacks)
- Dual track reader (track 1&2)
- Optional Features
 - Internal PIN pad
 - Smart card reader
 - Track 2&3 card reader
 - 512KB or 1MB transaction RAM models
 - Rechargeable / replaceable battery model

Physical/Electrical

- Dimensions 3.62in (H) x 5.9in (W) x 10.2in (D)
- Weight - 2.07 lbs. (without paper)
- Shipping weight - 5.1 lbs.
- UL approved AC/DC adapter 14.5Vdc / 1.5A



TransAction Solutions™

USA Corporate Office
50 Gordon Drive
Syosset, New York 11791
Tel: (516) 484 9898

Enhanced by
NURIT APPS™