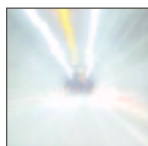




T7P

integrated terminal with printer



Get efficient upgrading of authorization-only equipment:

- Takes up less counter space with small footprint
- Trains cashiers with easy-to-learn, simple-to-use 35-key keyboard
- Delivers fast transactions and authorizations
- Changes paper, ribbons and printer module easily and quickly
- Smart card reader option, EMV-certified



innovation. results. leadership.



www.hypercom.com

T7P

integrated terminal with printer

Ideal for Upgrades

The Hypercom® T7P is designed for upgrading authorization-only equipment and for merchants moving to data capture and debit applications. It features an integrated modular impact or quiet thermal printer.

Reads All Card Formats

The T7P can read all types of credit, debit, check and charge cards and an external PIN pad can be attached for supporting cardholder entry of PIN numbers. Dedicated function keys allow one-step operation of everyday processes.

Additional Benefits

Price/performance benefits of the T7P include savings on user training, reduced telephone line costs and shorter processing and settlement times. The T7P also accommodates new software applications demanded by the marketplace which can be remotely downloaded from a sophisticated Terminal Management System.

Specifications:

Display

LCD: 2 lines x 20 characters; backlight reliable to 25,000 hours (half-life calculated)

Keypad

Silicone rubber; 35 keys, reliable to 35,000 keystrokes (calculated)

Card Reader

Magnetic Stripe: Tracks 1, 2 (standard), Track 3 (optional); reliable to 400,000 reads (calculated)
Chip/Smart Card Interface: ISO 7816; EMV-certified

Communications

Modem: 2400 or 1200bps; synchronous (SDLC) & asynchronous; 9600bps (optional)
LAN: RS-485 Hypercom LAN
PIN pad port: 2-wire or 4-wire; RS-422
Peripheral port: compatible with S7C, S7SC, S8, P7E, ICE, HFT 105

Printer

Thermal or friction
Paper width: 2.26 in/57.5 mm
Paper type: single-ply (thermal) or 1, 2 or 3-ply (friction); reliability to 5 million lines (thermal, calculated) or 1.35 million lines (friction, calculated)

Memory

RAM: 512 KB standard, 1.0 MB (optional)
RAM backup: 5-year battery
EPROM: 32 KB

Power

AC: 100-240 V, 50/60 Hz
DC: 24 V, 1 A

Footprint

6.25 in x 11.5 in x 4.5 in/
15.88 cm x 29.21cm x 11.43 cm

Weight

1.98 lbs/0.74 kg approximate

Environment

Temperature: 0-45°C/32- 110°F
Humidity: Max 85%, non-condensing
ESD: 12,000 volts

Reliability

100,000 hours (MTBF calculated), excluding printer

Specifications subject to change without notice

World Headquarters/ North America

Hypercom Corporation
2851 W. Kathleen Road
Phoenix, Arizona 85053
USA
Tel: +1.602.504.5000
Fax: +1.602.866.5380

Latin America

Hypercom Industria e Comercio LTDA
21/F Metro Centre II
Centro Empresarial Atibaia
Rodovia Dom Pedro I, KM 87, 5
Av. Tegula, 888-Ponte Alta
Atibaia 12940-000, Brazil
Tel: +55.11.4417.7000
Fax: +55.11.4417.7060

Asia/Pacific Rim

Hypercom Asia Ltd.
21/F Metro Centre II
21 Lam Hing Street
Kowloon Bay, Kowloon
Hong Kong
Tel: +85.2.2561.6800
Fax: +85.2.2561.5890

Europe/Middle East/Africa

Hypercom EMEA, Inc.
Unit 2, Woking Eight
Forsyth Road
Woking, GU21 5SB,
United Kingdom
Tel: +44.1483.718600
Fax: +44.1483.718601

©2002-2004 Hypercom Corporation, all rights reserved. Hypercom and the Hypercom logo are registered trademarks of Hypercom Corporation. ICE and epicPortz are trademarks of Hypercom Corporation. All other products or services mentioned in this document are trademarks, service marks, registered trademarks or registered service marks of their respective owners.

Celebrating 26 years of technology excellence, innovation and leadership, Hypercom Corporation is a leading global provider of electronic payment solution that add value at the point-of-transaction for consumers, merchants and acquirers, and yield increased profitability for its customers.

Widely recognized as the global payment technology innovator, Hypercom delivers comprehensive card payment terminal, network and server solutions that help merchants and financial institutions generate revenues and increase profits.

Headquartered in Phoenix, Arizona, Hypercom's card payment terminal, network and server solutions are leading the transformation of electronic payments in more than 100 countries.

940084-002, Rev. D

02/04



innovation. results. leadership.

www.hypercom.com